

Question #1

What is this product?

1. Napolito
2. Jujube
3. Mayhaw
4. Aloe Vera



What insect pest is of major concern for this product?

- A. Aphids
- B. White flies
- C. Mealybugs
- D. Fire ants

Question #2

What is this product?

1. Plum
2. Fig
3. Jicama
4. Kohlrabi



Which of the following is not a standard variety of this product?

- A. Alma
- B. Celeste
- C. Jackson Wonder
- D. Texas Everbearing

Question #3

What is this product?

1. Rib Eye Steak
2. Pork Chop
3. Flank Steak
4. T-Bone Steak



From what part of the animal is this cut of meat found?

- A. Rib
- B. Loin
- C. Round
- D. Flank

Question #4

What is this product?

1. Dill
2. Rosemary
3. Aloe Vera
4. Cilantro



At what point does this product contain the most flavor?

- A. Before flowering
- B. While flowering
- C. After flowering
- D. The flavor does not change

Question #5

What is this product?

1. Artichoke
2. Green Bean
3. Leeks
4. Okra



For good yields, where must this product grow?

- A. Partial sun, wet soil
- B. Full sun, well drained soil
- C. Partial sun, well drained soil
- D. Full sun, wet soil

Question #6

What is this product?

1. Bok Choy
2. Jicama
3. Jujube
4. Potato



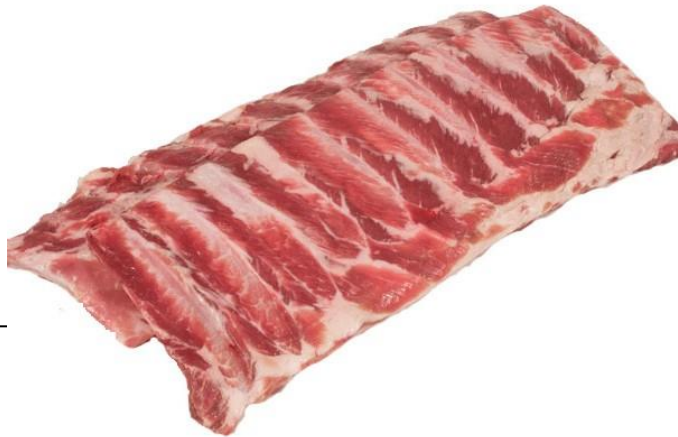
In which part of Texas is this product most popular?

- A. North Texas
- B. East Texas
- C. South Texas
- D. West Texas

Question #7

What is this product?

1. Spareribs
2. Smoked Hocks
3. Pork Chop
4. Ham Roast



This product comes from the _____ part of the hog.

- A. Shoulder Butt
- B. Loin
- C. Leg
- D. Side

Question #8

What is this product?

1. Jalapeno
2. Serrano
3. Bell Pepper
4. Tabasco Pepper



When is the ideal time to start planting this product in the spring?

- A. January to February
- B. February to March
- C. March to April
- D. April to May

Question #9

What is this product?

1. Nectarine
2. Peach
3. Apricot
4. Plum



This product is the leading deciduous fruit crop grown in where?

- A. Arkansas
- B. California
- C. New York
- D. Texas

Question #10

What is this product?

1. Cantaloupe
2. Orange
3. Papaya
4. Pineapple



What is the probable country of origin for this product?

- A. Alaska
- B. Brazil
- C. Polynesia
- D. United States

Question #11

What is this product?

1. Skirt Steak
2. Beef for Stew
3. Filet Mignon
4. Prime Rib



Which of the following is true about this product?

- A. Thick Cut
- B. Best Boiled
- C. Best to Marinate First
- D. Bland Flavor

Question #12

What is this product?

1. Blackberry
2. Blueberry
3. Cherry
4. Strawberry



What is a major pest that affects these plants?

- A. Bees
- B. Millipedes
- C. Snails
- D. Spiders

Question #13

What is this product?

1. Jujube
2. Olive
3. Fig
4. Almond



What is the most important factor in terms of growing this product?

- A. Soil
- B. Fertilizer
- C. Climate
- D. Farmer

Question #14

- What is this product?
 1. Sirloin Steak
 2. Rib-Eye Steak
 3. Ground Beef
 4. Strip Loin Steak



- What other name is this product also referred to as?
- A. Frisco Steak
 - B. Juicy Steak
 - C. Delmonico Steak
 - D. Yearling Steak

Question #15

What is this product?

1. Artichoke
2. Tomato
3. Tomatillo
4. Turnip

What term refers to the product's wrapping?

- A. Calyx
- B. Exoskeleton
- C. Shell
- D. Steeple



Question #16

What is this product?

1. Tomato
2. Bell pepper
3. Winter Squash
4. Persimmon

This product contains more of what vitamin than citrus?

- A. Vitamin A
- B. Vitamin B
- C. Vitamin C
- D. Vitamin D



Question #17

What is this product?

1. Spareribs
2. Smoked Hocks
3. Pork chop
4. Ham Roast



This product comes from the _____ part of the hog.

- A. Shoulder Butt
- B. Loin
- C. Leg
- D. Side

Question #18

What is this product?

1. Artichoke
2. Cauliflower
3. Cilantro
4. Jicama



What type of mildew is product-common during rainy weather?

- A. Black mildew
- B. Orange mildew
- C. Powdery mildew
- D. Red mildew

Question #19

What is this product?

1. Raspberry
2. Blueberry
3. Blackberry
4. Mulberry



Of these diseases, which is the most serious disease in Texas of this product?

- A. Double Blossom
- B. Crown Gall
- C. White Grubs
- D. Nematodes

Question #20

What is this product?

1. Asparagus
2. Coconut
3. Okra
4. Persimmon



With proper care and in a suitable climate, the crown of this product can last:

- A. 1 to 5 years
- B. 15 to 25 years
- C. 2 to 4 years
- D. Up to 10 years

Let's Score and See How You Did

Question #1

What is this product?

1. Napolito
2. Jujube
3. Mayhaw
4. **Aloe Vera**



What insect pest is of major concern for this product?

- A. Aphids
- B. White flies
- C. **Mealybugs**
- D. Fire ants

Question #2

What is this product?

1. Plum
2. Fig
3. Jicama
4. Kohlrabi



Which of the following is not a standard variety of this product?

- A. Alma
- B. Celeste
- C. Jackson Wonder
- D. Texas Everbearing

Question #3

What is this product?

1. Rib Eye Steak
2. Pork Chop
3. Flank Steak
4. T-Bone Steak



From what part of the animal is this cut of meat found?

- A. Rib
- B. Loin
- C. Round
- D. Flank

Question #4

What is this product?

1. **Dill**
2. Rosemary
3. Aloe Vera
4. Cilantro



At what point does this product contain the most flavor?

- A. **Before flowering**
- B. While flowering
- C. After flowering
- D. The flavor does not change

Question #5

What is this product?

1. Artichoke
2. Green Bean
3. Leeks
4. Okra



For good yields, where must this product grow?

- A. Partial sun, wet soil
- B. Full sun, well drained soil**
- C. Partial sun, well drained soil
- D. Full sun, wet soil

Question #6

What is this product?

1. Bok Choy
2. Jicama
3. Jujube
4. Potato



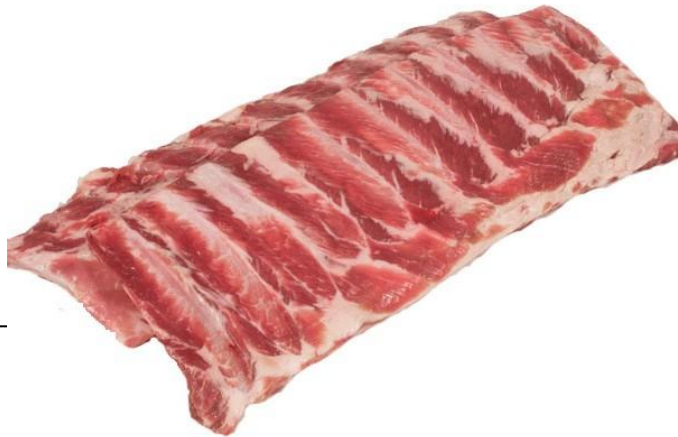
In which part of Texas is this product most popular?

- A. North Texas
- B. East Texas
- C. South Texas
- D. West Texas

Question #7

What is this product?

1. **Spareribs**
2. Smoked Hocks
3. Pork Chop
4. Ham Roast



This product comes from the _____ part of the hog.

- A. Shoulder Butt
- B. Loin
- C. Leg
- D. Side**

Question #8

What is this product?

1. **Jalapeno**
2. Serrano
3. Bell Pepper
4. Tabasco Pepper



When is the ideal time to start planting this product in the spring?

- A. January to February
- B. February to March
- C. **March to April**
- D. April to May

Question #9

What is this product?

1. Nectarine
2. Peach
3. Apricot
4. Plum



This product is the leading deciduous fruit crop grown in where?

- A. Arkansas
- B. California
- C. New York
- D. Texas

Question #10

What is this product?

1. Cantaloupe
2. Orange
3. Papaya
4. **Pineapple**



What is the probable country of origin for this product?

- A. Alaska
- B. Brazil**
- C. Polynesia
- D. United States

Question #11

What is this product?

1. **Skirt Steak**
2. Beef for Stew
3. Filet Mignon
4. Prime Rib



Which of the following is true about this product?

- A. Thick Cut
- B. Best Boiled
- C. **Best to Marinate First**
- D. Bland Flavor

Question #12

What is this product?

1. Blackberry
2. Blueberry
3. Cherry
4. Strawberry



What is a major pest that affects these plants?

- A. Bees
- B. Millipedes
- C. Snails
- D. Spiders

Question #13

What is this product?

1. Jujube
2. Olive
3. Fig
4. Almond



What is the most important factor in terms of growing this product?

- A. Soil
- B. Fertilizer
- C. Climate
- D. Farmer

Question #14

• What is this product?

1. Sirloin Steak
2. Rib-Eye Steak
3. Ground Beef
4. Strip Loin Steak



What other name is this product also referred to as?

- A. Frisco Steak
- B. Juicy Steak
- C. Delmonico Steak
- D. Yearling Steak

Question #15

What is this product?

1. Artichoke
2. Tomato
3. Tomatillo
4. Turnip

What term refers to the product's wrapping?

- A. Calyx
- B. Exoskeleton
- C. Shell
- D. Steeple



Question #16

What is this product?

1. Tomato
2. Bell pepper
3. Winter Squash
4. **Persimmon**

This product contains more of what vitamin than citrus?

- A. Vitamin A
- B. Vitamin B
- C. **Vitamin C**
- D. Vitamin D



Question #17

What is this product?

1. Spareribs
2. Smoked Hocks
3. **Pork chop**
4. Ham Roast



This product comes from the _____ part of the hog.

- A. Shoulder Butt
- B. **Loin**
- C. Leg
- D. Side

Question #18

What is this product?

1. **Artichoke**
2. Cauliflower
3. Cilantro
4. Jicama



What type of mildew is product-common during rainy weather?

- A. Black mildew
- B. Orange mildew
- C. **Powdery mildew**
- D. Red mildew

Question #19

What is this product?

1. Raspberry
2. Blueberry
3. **Blackberry**
4. Mulberry



Of these diseases, which is the most serious disease in Texas of this product?

- A. **Double Blossom**
- B. Crown Gall
- C. White Grubs
- D. Nematodes

Question #20

What is this product?

1. **Asparagus**
2. Coconut
3. Okra
4. Persimmon



With proper care and in a suitable climate, the crown of this product can last:

- A. 1 to 5 years
- B. 15 to 25 years**
- C. 2 to 4 years
- D. Up to 10 years